

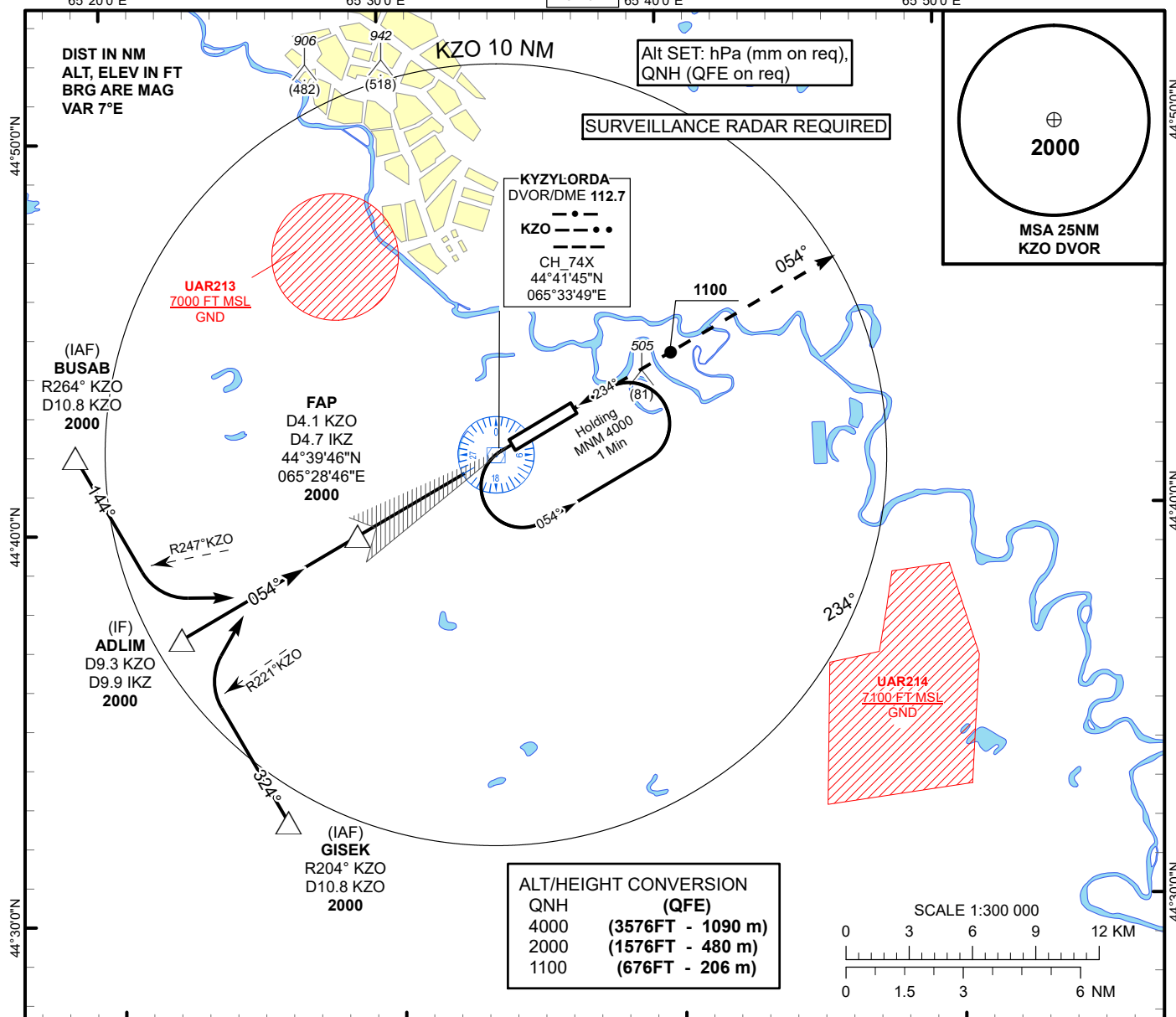
INSTRUMENT  
APPROACH  
CHART - ICAO

AERODROME ELEV **433 FT**  
HEIGHTS RELATED TO  
THR RWY 05 - ELEV **424 FT**

ILS  
LLZ 111.1  
IKZ  
GP 331.7  
CH 48X

KYZYLORDA TOWER 120.9  
KYZYLORDA ATIS (EN) 134.9  
KYZYLORDA ATIS (RU) 122.9

KYZYLORDA  
ILS/DME  
RWY 05



CHANGE: Missed approach, editorial.

65°20'0"E

IF

ADLIM  
D9.3 KZO  
D9.9 IKZ  
2000

65°30'0"E

FAP  
D4.1 KZO  
D4.7 IKZ  
2000

65°40'0"E

TRANSITION ALT  
10000

65°50'0"E

MISSED APPROACH  
Climb on track 054° to 2000.  
After passing 1100 radar  
vectoring will be provided.  
RADIO FAILURE:  
In the case of RCF  
climb on track 054° to 2000  
outbound to 5.0 KZO.  
Turn right, climb to 4000  
to KZO and join to  
holding pattern.

10

9

8

7

6

5

4

3

2

1

0

1

DVOR/DME  
KZO

GP 3.0°

054°

054°

ELEV 424  
THR RWY 05

Aircraft Category		A	B	C	D	DIST to THR DME IKZ	NM	4.7	4.0	3.0	2.0	1.0
Straight-in Approach OCA/H						DME KZO	NM	4.1	3.4	2.4	1.4	0.4
	ILS CAT I	644(220)		644(220)		ALTITUDE	FT	2000	1760	1436	1113	792
						HEIGHT	FT	(1576)	(1336)	(1012)	(689)	(368)

DME IKZ ZERO RANGED TO THR RWY 05

Aerodrome Operating Minima DH ft x RVR(CMV)	ILS CAT I					GS	Kt	80	100	120	140	160	180
						Desc.Rate(5.2%)	ft/min	420	530	630	740	840	950

KYZYLORDA  
ILS/DME

AERONAUTICAL DATA TABULATION

ILS approach to RWY05 from ADLIM, BUSAB, GISEK	
Fix/point	Coordinates
KZO DVOR/DME	44° 41' 44,9"N 065° 33' 49,3"E
IKZ D4.7 KZO D4.1 (FAP)	44° 39' 46,1"N 065° 28' 45,9"E
ADLIM (IF) KZO D9.3	44° 37' 15,2"N 065° 22' 21,8"E
BUSAB (IAF) R264°KZO D10.8KZO	44° 41' 59,4"N 065° 18' 43,8"E
GISEK (IAF) R204°KZO D10.8KZO	44° 32' 31,0"N 065° 25' 59,2"E
THR RWY 05	44° 42' 01.89"N 065° 34' 32.79"E
IKZ LOC	44° 42' 58.5"N 065° 36' 58.0"E